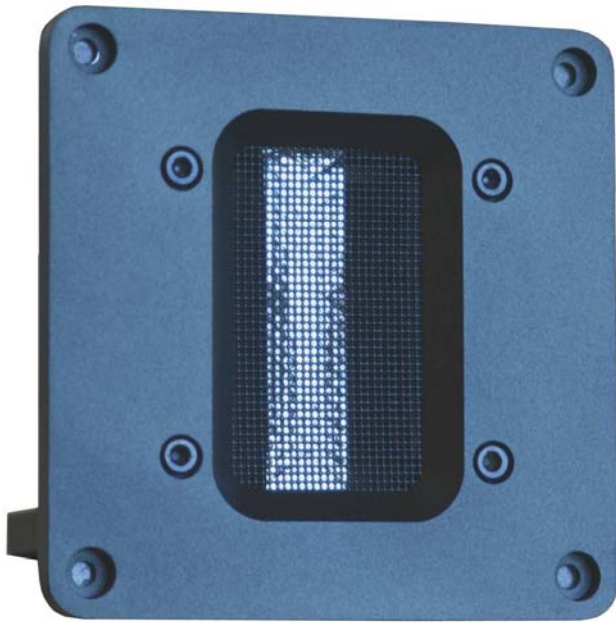


# APR1.2 Ribbon Tweeter



Impedance: 6ohms  
 Rated Power: 60W  
 Sensitivity: 93dB/W/m  
 Frequency range: 1000Hz-30kHz  
 Dimension of ribbon(mm): 14.5W×60L×0.015T  
 Shape of ribbon: Non-corrugated  
 Mass of ribbon: 26mg  
 Moving area of ribbon: 870 square millimeter  
 Gap flux: 0.36Tesla  
 Recommended crossover frequency: 2300Hz  
 Material of faceplate: aluminum  
 Dimension of faceplate(mm): 106W×106H×6T  
 Outside dimension(mm): 106W×106H×100D  
 Net weight: 1.6kg/pc

