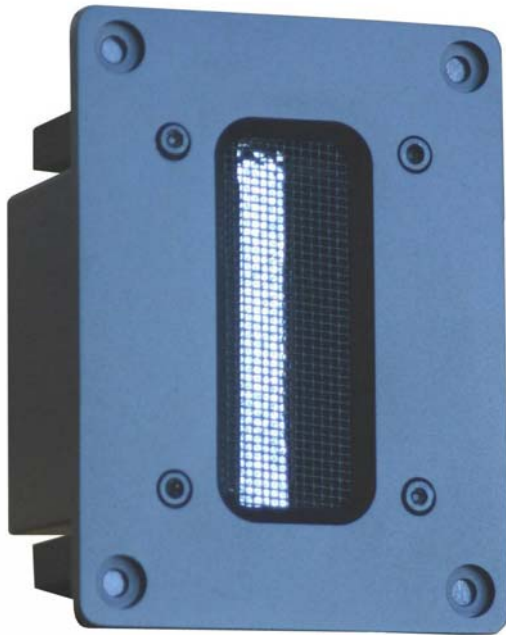


APR2.1 Ribbon Tweeter



Impedance: 6ohms
 Rated Power: 30W
 Sensitivity: 92dB/W/m
 Frequency range: 1700Hz-30kHz
 Dimension of ribbon(mm): 8.5W×60L×0.015T
 Shape of ribbon: Non-corrugated
 Mass of ribbon: 16mg
 Moving area of ribbon: 510 square millimeter
 Gap flux: 0.58Tesi
 Recommended crossover frequency: 2500Hz
 Material of faceplate: aluminum
 Dimension of faceplate(mm): 74W×110H×4T
 Outside dimension(mm): 74W×110H×84D
 Net weight: 1.05kg/pc

