

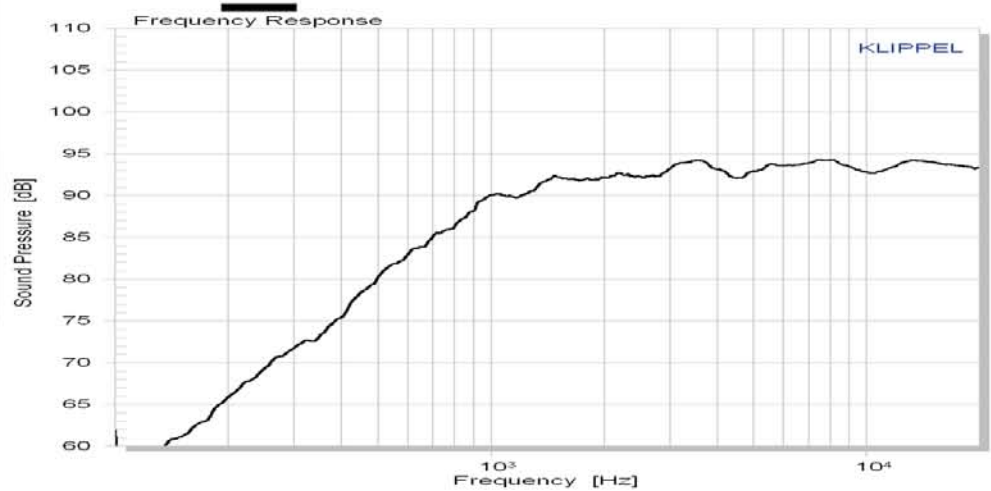
C30-6-024

Tweeter

DOMEMATERIAL: CERAMIC
APPLICATION: TWEETER
NOMINAL DIAMETER: 30 mm
SENSITIVITY: 93 dB

MAIN FEATURES :

SPECIAL DOME CUTOUTS
OVERHUNG MOTOR DESIGN
SOFT FABRIC SURROUND
VENTED VC & POLE PIECE
FERROFLUID FILLING
1800 HZ - 28 KHZ



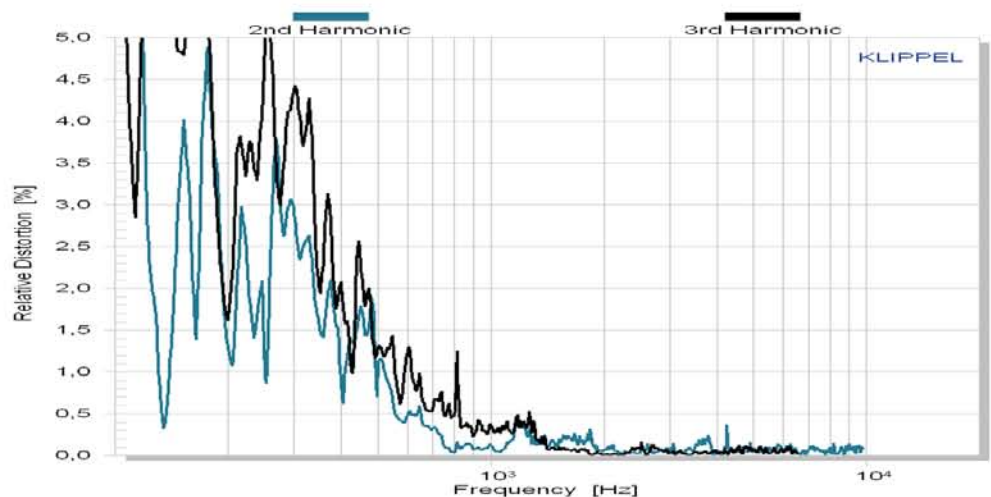
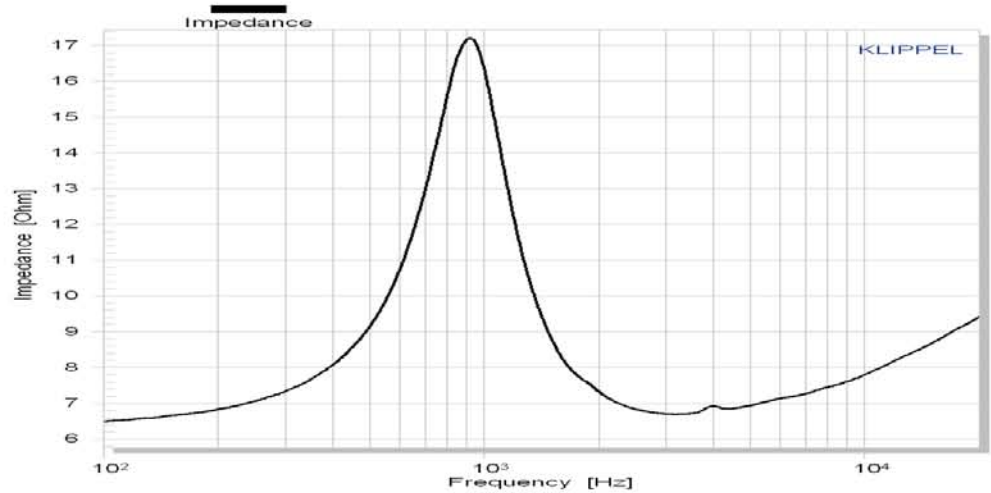
The **C30 - 6 - 024** is a 1.2 inch tweeter with ultra hard **ceramic dome** in a 82 mm frontplate.

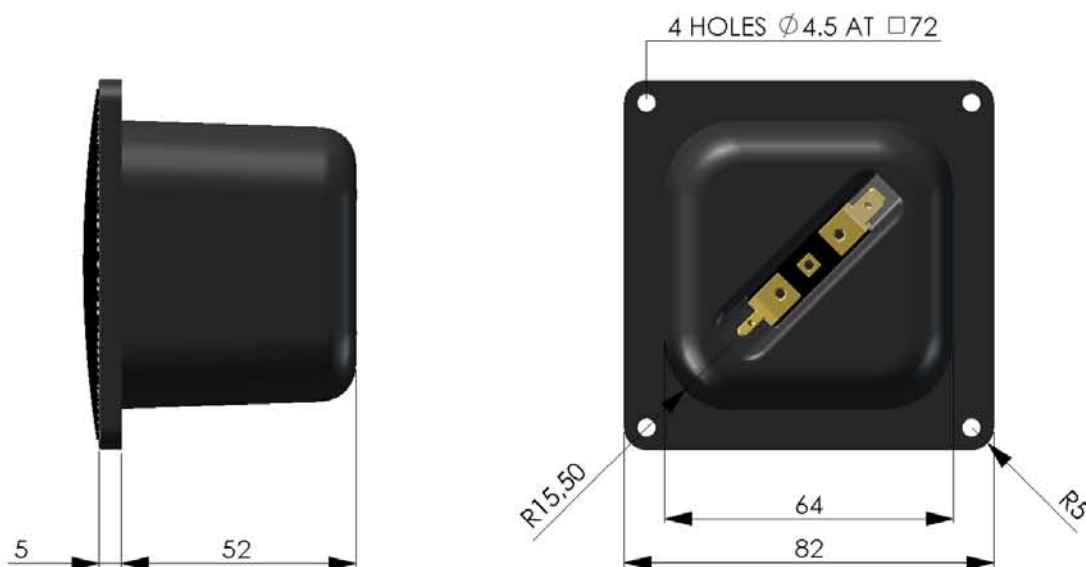
Anti-resonant **cutout fills** in the ceramic dome provide for damping of the dome resonance.

An overhung motor design with vented aluminium voice coil former and neodymium magnet guarantees low energy storage and excellent heat transfer.

The **soft fabric surround** and ferrofluid with high viscosity center the moving parts with distinctive linearity.

We recommend an application above 1800 Hz.





| Mechanical data | | | |
|------------------------------------------|--|-------------------------------|----|
| Overall square | | 82 | mm |
| Cutout hole square | | 64 | mm |
| Frontplate depth | | 5 | mm |
| Overall depth | | 57 | mm |
| Motor assembly diameter | | - | |
| Motor assembly depth | | - | |
| Screw fitting | | DIN 7984, 4mm | |
| Terminal | | + : 4.8 x 0.8 / - : 2.8 x 0.8 | mm |
| Shipping weight / net weight (one piece) | | 0.54 / 0.44 | mm |
| Shipping box size (pair) | | 130 / 130 / 190 | mm |

| Thiele/Small Parameters | | | |
|--------------------------|-----|-------|-----------------|
| Sensitivity (2.83V / 1m) | Lp | 93* | dB |
| DC-resistance | Re | 6.0 | Ohm |
| resonance frequency | Fs | 930 | Hz |
| equivalent volume of air | Vas | - | L |
| mechanical Q | Qms | 1.96 | |
| electrical Q | Qes | 1.06 | |
| total Q | Qts | 0.69 | |
| effective piston area | Sd | 8.55 | cm ² |
| moving mass | Mms | 0.4 | g |
| suspension compl. | Cms | 0.073 | mm/N |
| mechanical resistance | Rms | 1.2 | kg x s |

| Voice Coil data | | | |
|----------------------------|------|----------|------|
| Power handling | P | 120* | Watt |
| Linear excursion | Xmax | +/- 0.5 | mm |
| Voice coil diameter | | 19.4 | mm |
| Voice coil former material | | Al | |
| Voice coil wire material | | Cu | |
| Voice coil inductance | Le | 0.03 | mH |
| Force factor | Bl | 3.64 | N/A |
| Motor type | | Overhung | |
| Ferrofluid filling | | yes | |

* Please refer to www.accuton.com for exact measurement conditions and further information.