



# CAT 308

## Classic Advanced Tweeter, Ø 104mm, 8Ω

### Features:

- \* 104mm aluminum face plate
- \* Large Hexatech™ Aluminum voice coil
- \* Replaceable Acuflex™ dome / coil assembly
- \* Ferro fluid cooled
- \* High power handling
- \* Sturdy gold plated input tags



### SPECIFICATIONS

#### General Data

Overall Dimensions	DxH	104mm(4.09")x46mm(1.81")
Nominal Power Handling (DIN)	P	200W
Transient Power 10ms		1000W
Sensitivity 1W/1M		90dB SPL
Frequency Response		1,600-25,000 Hz
Cone/Dome Material		Acuflex™ hand coated soft dome
Net Weight	Kg	0.573

#### Electrical Data

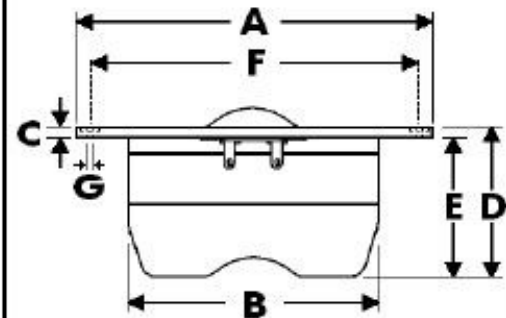
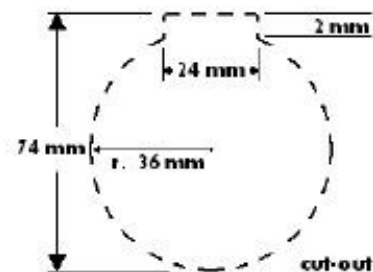
Nominal Impedance	Z	8Ω
DC Resistance	Re	5.2Ω
Voice Coil Inductance @ 1KHz	LBM	0.09mH

#### Voice Coil and Magnet Parameters

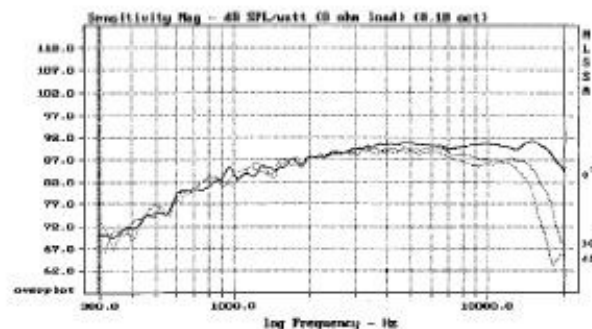
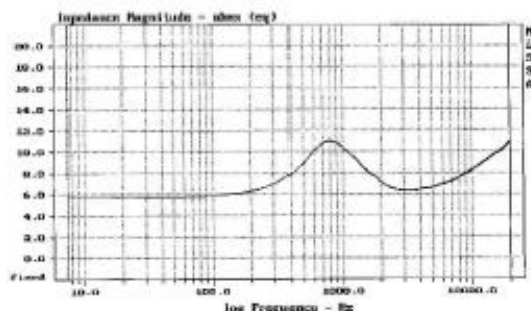
Voice Coil Diameter	DIA	28mm
Voice Coil Height		2.7mm
HE Magnetic Gap Height	HE	2.5mm
Max. Linear Excursion	X	
Voice Coil Former		Aluminum
Voice Coil Wire		Hexatech™ Aluminum
Number Of Layers		2
Magnet System Type		Ferrite ven
B Flux Density	B	1.5 T
BL Product	BXL	3.5 N.A

#### T-S Parameters

Suspension Compliance	Cms	
Mechanical Q Factor	Qms	
Electrical Q Factor	Qes	
Total Q Factor	Qts	
Mechanical Resistance	Rms	
Moving Mass	Mms	0.44 g
Eq. Cas Air Load (liters)	VAS	
Resonant Frequency	Fs	650 Hz
Effective Piston Area	SD	6.0 cm <sup>2</sup>



A - Overall diameter	104mm
B - Magnet/Chamber diameter	72mm
C - Flange thickness	3mm
D - Overall height	46mm
E - Magnet/Chamber depth	43mm
F - Mounting holes location diameter	94mm
G - 3 Mounting holes, at 120° interval, inner hole diameter	Ø 3.7mm
pocket	h 1mm, Ø 7mm



This model replaces former Morel MDT-30 and MDT-32S models.

Morel operate policy of continuous product design improvement, consequently specifications are subject to alteration without prior notice.