

Electro-Voice

ELECTRO-VOICE, INC.
BUCHANAN, MICHIGAN



18W and 18WK

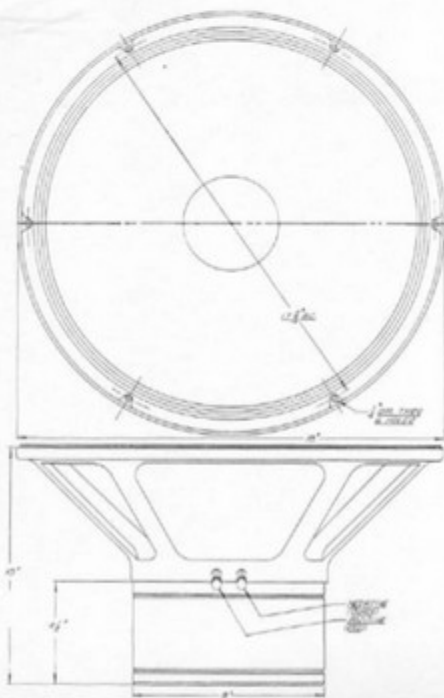


Fig. 1 — Dimensions

Specifications and Instructions Models 18W and 18WK Low-Frequency Drivers

Incorporating all the design advantages of piston-type low-frequency drivers, the E-V 18-inch reproducers include also the latest developments in the electro-acoustic art. Bass response is phenomenal, affording for the first time, pleasing musical balance without the masking effects previously experienced from high cone resonance and inefficient voice coil gap designs. E-V low-frequency drivers have special cone and spider suspensions as well as one-piece, welded magnetic structures of exclusive design. Tailored to optimum listening requirements, these new developments insure smooth even coverage of the entire bass spectrum.

FEATURES — Exclusive, E-V engineered features include true concentric centering of the voice coil; augmented balanced bass response in conjunction with the production of a plane wave-front; especially rugged voice-coil cone juncture; edge-wound aluminum voice coil design affording 18% more efficiency and consequent damping of transient distortion; heavy magnet structure with one-piece, all-welded construction.

SPECIFICATIONS

	18W	18WK
Frequency Response:	Essentially flat to 600 cps.	Exact response depends on enclosure.
RETMA Sensitivity Rating:	53 db	53 db
Free-Space Cone Resonance:	25-35 cps	20-30 cps
Power Handling Capacity:		
Program Material:	30 watts	30 watts
Peak:	60 watts	60 watts
Critical Damping Factor:	1 in infinite baffle	10 in Patrician or Residence Entertainment Center
Nominal Impedance:	16 ohms	16 ohms
D. C. Resistance:	11.6 ohms	3.2 ohms
Voice Coil Diameter:	2½ inches	2½ inches
Magnet Weight:	5¼ lbs	5¼ lbs
Size:	18 in. dia. x 10 in. deep overall	18 in. dia. x 10 in. deep overall
Mounting:	Four ¼ in. holes equally spaced on 17¼-in. circle	
Baffle Opening:	16½ in.	Depends on horn throat area
Net Weight:	38 lb	38 lb
Shipping Weight:	43 lb	43 lb

INSTALLATION

Optimum bass response with E-V low-frequency driver units is obtained in the recommended baffles. Where a baffle is available of the "infinite" type, such as a closet, or a wall with large volumetric capacity available behind the cone, excellent results will be obtained in the accomplishment of the bass range. The ideal volume for the 18W is 28 cubic feet or more, for with this volume the low free-space resonance of the bass cone becomes the controlling factor in achieving reproduction of the first octaves. The response will be flat to 25-35 cps. The 18WK is recommended for use only in K-type enclosures in which the back air load volume is restricted to approximately 6000 cubic inches. In this application, the front radiation must be horn-loaded.

Specifications and Instructions

ELECTRO-VOICE Models 18W and 18WK