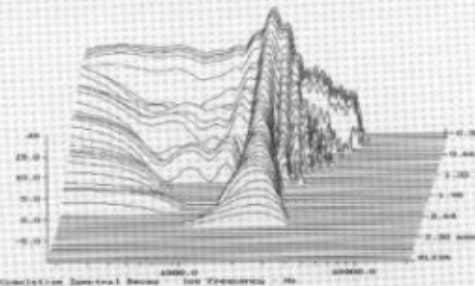


SOPHISTICATED LOUDSPEAKER TECHNOLOGY

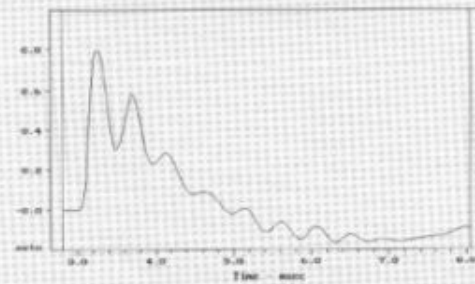
Frequenzgang/Amplitude response



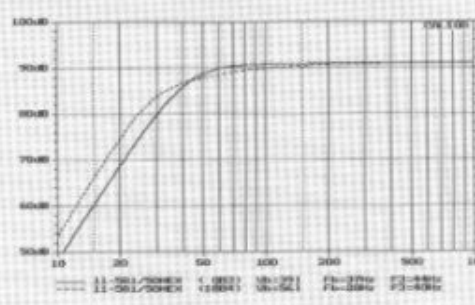
Zerfallsspektrum / Waterfall



Sprungantwort / Step response



Simulation / Low Frequency alignment



## 11-581/50HEX

11" 'state of the art' HEXACONE-woofer  
for the outstanding combination of perfect  
lowest frequency reproduction and  
excellent pulse response

Nennbelastbarkeit / Nominal power	150 W
Impedanz / Nominal impedance	8 Ω
Frequenzbereich / Frequency range	28-1000 Hz
Empfindlichkeit / Sensitivity	91 dB
Freiluftresonanz / Free air resonance	23 Hz
Qts	0,29
Qms	8,59
Qes	0,30
Vas	110 l
Gleichstromwiderstand / DC resistance	5,4 Ω
Lineare Auslenkung / Linear excursion	5,0 mm
BL Produkt / BL product	13,5 N/A
Bewegte Masse / Moving mass incl. air	57 g
Eff. Membranfläche / Effective cone area	363 cm <sup>2</sup>
Membranmaterial / Cone material	HEXACONE
Schwingspuleninduktivität / Voice coil inductivity	0,69 mH
Schwingspulen-Ø / Voice coil Ø	50 mm
Wickelhöhe / Voice coil height	18 mm
Wicklungslagen / Number of layers	2
Trägermaterial / Former material	Kapton
Polplattendicke / Air gap height	8,0 mm
Magnet-Ø / Magnet Ø	135 mm
Magnethöhe / Magnet height	20 mm
Luftspaltinduktion / Flux density	1,05 Tesla
Korbmaterial / Chassis material	aluminum-diecast basket
Außen-Ø / Overall Ø	280 mm
Einbau-Ø / Baffle cutout	244 mm
Bauhöhe / Depth	104 mm