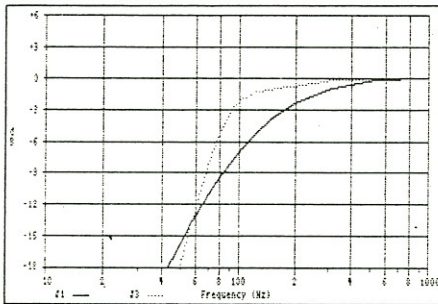


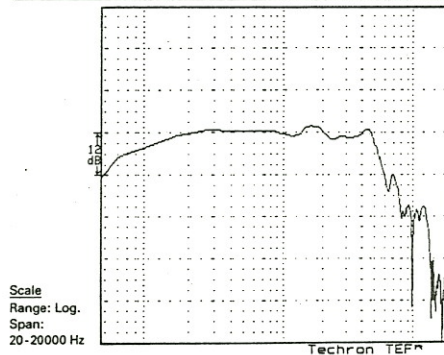
CAB. RESPONSE (ACC. T.&S.)



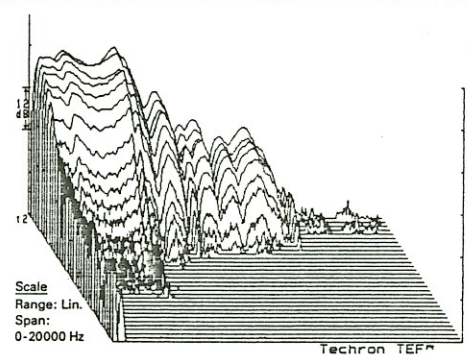
TECHNICAL DATA

4-203/25 HEX			
Nominal Diameter	120 mm	Voice-Coil Diameter	25,6 mm
Frequency-Range	60-6000 Hz	Voice-Coil Winding-Height	8 mm
Impedance	Z 8 Ω	Voice-Coil Former Material	Kapton
DC-Resistance	R _E 5,8 Ω	Voice-Coil Inductance	0,27 mH
Resonant Frequency	F _S 59 Hz	Flux-Density	1,2 T
Total Q-Factor	Q _{TS} 0,263	Magnet-Size	90 mm
Electrical Q-Factor	Q _{ES} 0,28	Air-Gap Height	6 mm
Mechanical Q-Factor	Q _{MS} 4,33	Linear Excursion	X _{max} ± 1,0 mm
Emissive Piston Area	S _D 55,41 cm ²	Sensitivity	92 dB/W/m
Equivalent Air Volume	V _{AS} 6 l	Power Capacity, continuous	70 W
Compliance	C _{MS} 1,35 m/N	Power Capacity, 10 ms	500 W
Moving Mass	M _{MD} 5,2 g	Diaphragm Material	HEXACONE
Cabinet Suggestion	closed 2,3 l	Coating	yes
	vented 2,0 l		

FREQUENCY RESPONSE



FFT 3D



The HEXACONE driver 4-203/25 HEX has been conceived for the ultimate reproduction of medium frequencies over an extensive range. Compared to other cone midrange drivers, it gives outstanding pulse response up to about 4 kHz.

Das HEXACONE-Chassis 4-203/25 HEX ist als breitbandig einsetzbarer Mitteltöner konzipiert worden. Verglichen mit ähnlichen Konstruktionen bietet der 4-203/25 HEX ein hervorragendes Impulsverhalten bis etwa 4 kHz.

