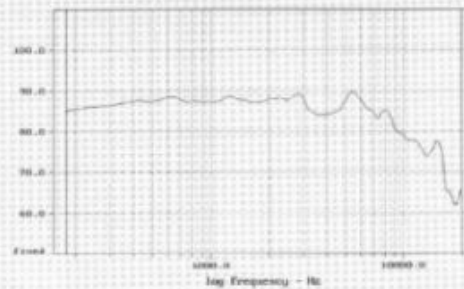


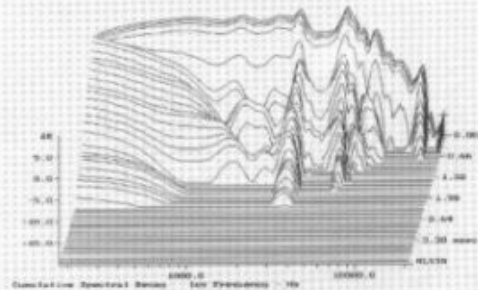


SOPHISTICATED LOUDSPEAKER TECHNOLOGY

Frequenzgang/Amplitude response



Zerfallsspektrum / Waterfall

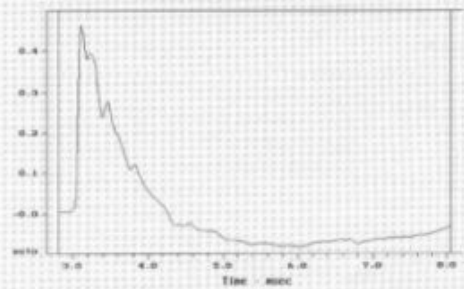


5-880/25HEX

5" 'state of the art' HEXACONE-bass/midrange unit for small monitor speakers as well as for application as a midrange driver in multiple way constructions

Nennbelastbarkeit / Nominal power	70 W
Impedanz / Nominal impedance	8 Ω
Frequenzbereich / Frequency range	48-3000 Hz
Empfindlichkeit / Sensitivity	87 dB
Freikultresonanz / Free air resonance	48 Hz
Qts	0,29
Qms	1,76
Qes	0,35
Vas	12,0 l
Gleichstromwiderstand / DC resistance	6,0 Ω
Lineare Auslenkung / Linear excursion	3,0 mm
BL Produkt / BL product	6,6 N/A
Bewegte Masse / Moving mass incl. air	8 g
Eff. Membranfläche / Effective cone area	79 cm ²
Membranmaterial / Cone material	HEXACONE
Schwingspuleninduktivität / Voice coil inductivity	0,43 mH
Schwingspulen-Ø / Voice coil Ø	25 mm
Wickelhöhe / Voice coil height	12 mm
Wicklungslagen / Number of layers	2
Trägermaterial / Former material	aluminum
Polplattendicke / Air gap height	6,0 mm
Magnet-Ø / Magnet Ø	90 mm
Magnethöhe / Magnet height	17 mm
Luftspaltinduktion / Flux density	1,15 Tesla
Korbmaterial / Chassis material	aluminum-diecast basket
Außen-Ø / Overall Ø	156 mm
Einbau-Ø / Baffle cutout	128 mm
Bauhöhe / Depth	70 mm

Sprungantwort / Step response



Simulation / Low Frequency alignment

