



## 8-472/32 LH

New " Home HiFi HEXACONE woofer  
with longthrow technology and especially  
new construction of a HEATPIPE.

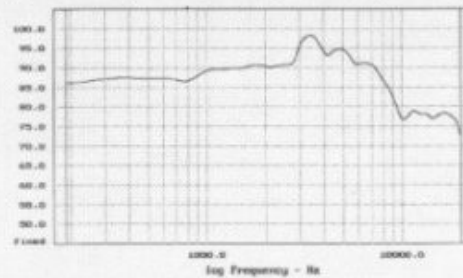
Nennbelastbarkeit / Nominal power	90 W*
Impedanz / Nominal impedance	8 Ω
Empfindlichkeit / Sensitivity	89 dB
Freiluftresonanz / Free air resonance	24 Hz
Qts	0,99
Qms	3,55
Qes	0,32
Vas	116 l
Gleichstromwiderstand / DC resistance	7 Ω
Bewegte Masse / Moving mass incl. air	27 g
Eff. Membranfläche / Effective cone area	219 cm <sup>2</sup>
Membranmaterial / Dome material	HEXACONE
Schwingspulen-Ø / voice coil Ø	32 mm
Wickelhöhe / Voice coil height	18,5 mm
Wicklungslagen / Number of layers	1
Trägermaterial / Former material	Kapton
Polplattendicke / Air gap height	8 mm
Magnet-Ø / Magnet Ø	102 mm
Magnethöhe / Magnet height	20 mm
Luftspaltinduktion / Flux density	1,1 Tesla
Korbmaterial / Chassis material	Alu diecast
Außen-Ø / Overall Ø	223 mm
Einbau-Ø / Baffle cutout	186 mm
Bauhöhe / Depth	108 mm

\*mit empf. Frequenzweiche / with recommended crossover

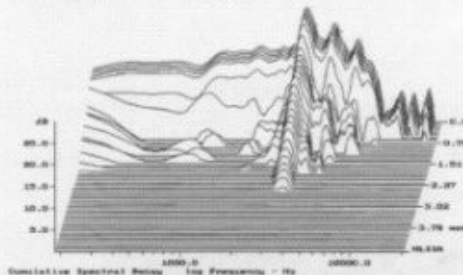
# FETON

### SOPHISTICATED LOUDSPEAKER TECHNOLOGY

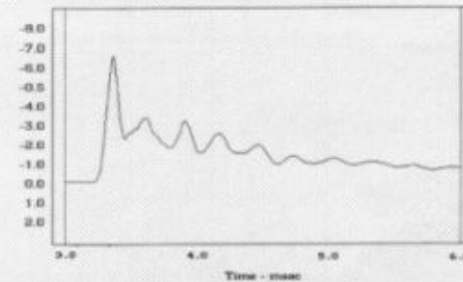
#### Frequenzgang / Amplitude response



#### Zerfallspektrum / Waterfall



#### Sprungantwort / Step response



#### Simulation / Low Frequency alignment

