

# 15 K 8711

15" Polykevlar® woofer



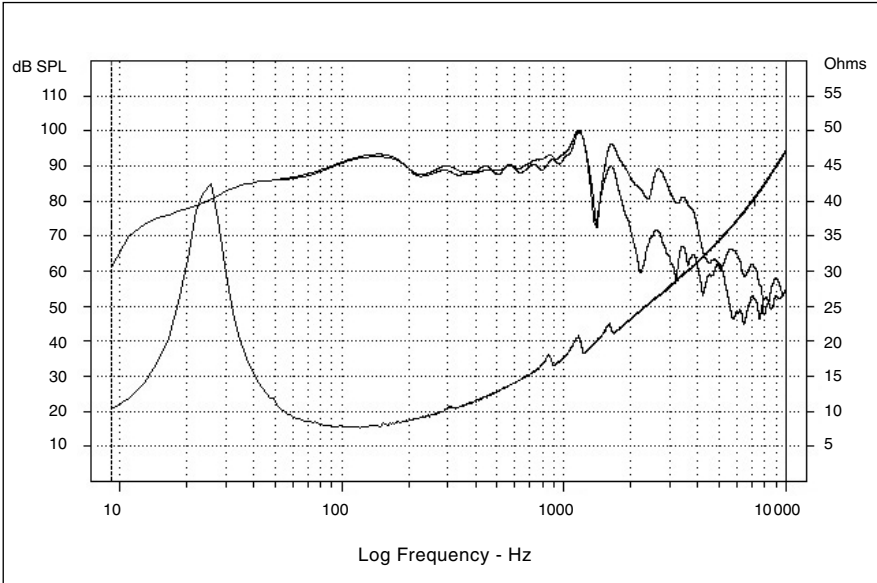
- Thick aluminium sand cast frame
- Straight profile Polykevlar® cone, large rubber surround
- Edgewound flat copper wire 77mm voice coil, black aluminium former
- Efficiency: 92dB
- Outstanding woofer/subwoofer optimum performance in 150 to 180l vented systems



## Specifications

Nominal power	225 W	
Maximum power	350 W	
Sensitivity	91.07 dB	
Cone	Kevlar®	
Surround	rubber	
Nom. impedance	6 ohms	
DC resistance	6.2 ohms	
VC diameter	77 mm	11.94 in
VC height	22 mm	0.87 in
Former	aluminium	
Layers	1	
Wire	copper	
Inductance	1.75 mH	
Xmax	6 mm	0.24 in
Magnet d x h	180 x 20 mm	7.08 x 0.78 in
Magnet weight	1800 g	3.97 lb
Flux density	1 T	
Gap height	10 mm	0.39 in
Net weight	11.5 kg	25.35 lb

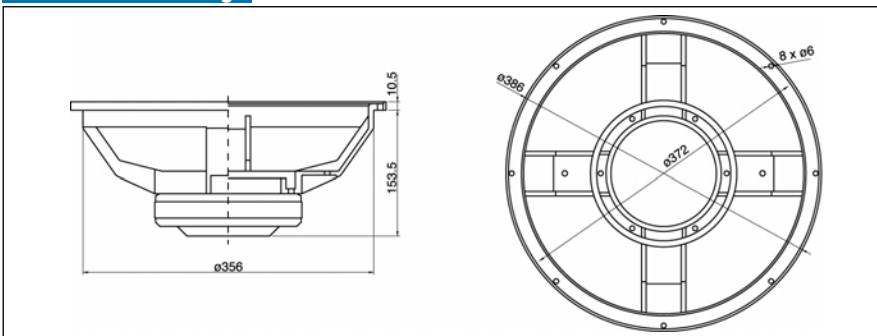
## Frequency Response / Impedance



## Parameters

Fs	23.9 Hz	
Vas	321.3 l	19606.9 in3
Qts	0.36	
Qes	0.42	
Qms	2.6	
Re	6.2 ohms	
Sd	855.3 Cm <sup>2</sup>	132.6 in2
Cas	229E-08 m5/N	
Mas	19.4 kg/m4	
Ras	1118.6 ohms.ac	
Cms	0313E-6 m/N	
Mms	141.56 g	0.312 lb
Rms	8.18 g/s	
Ces	450.7 mF	
Les	98.2 mH	
Res	38.4 ohms	
BI	17.72 N/A	
SPL	92 dB/W/m	

## Mechanical Drawing



## Suggested application

Load	V (l)	Fb (Hz)	F-3 (Hz)	Ql
Vented	150	29	32	7
Vented	180	26	29.9	7

Focal® is a trademark of Focal-JMLab®