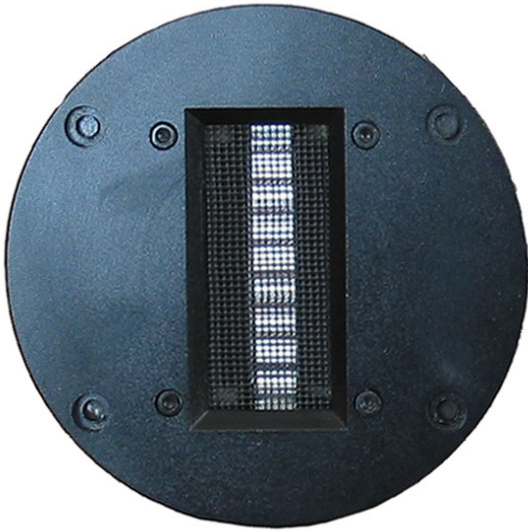


G2i Aluminum Ribbon Tweeter



Impedance: 6ohms
 Rated Power: 30W
 Sensitivity: 94dB/W/m
 Frequency range: 1700Hz-40kHz
 Dimension of ribbon(mm): 8.5W×60L×0.01T
 Shape of ribbon: wave
 Mass of ribbon: 12mg
 Moving area of ribbon: 510 square millimeter
 Gap flux: 0.55Tesla
 Recommended crossover frequency: 2500Hz
 Material of faceplate: aluminum
 Dimension of faceplate(mm): $\Phi 110 \times 4.5T$
 Outside dimension(mm): $\Phi 110 \times 84.5D$
 Net weight: 0.98kg/pc

