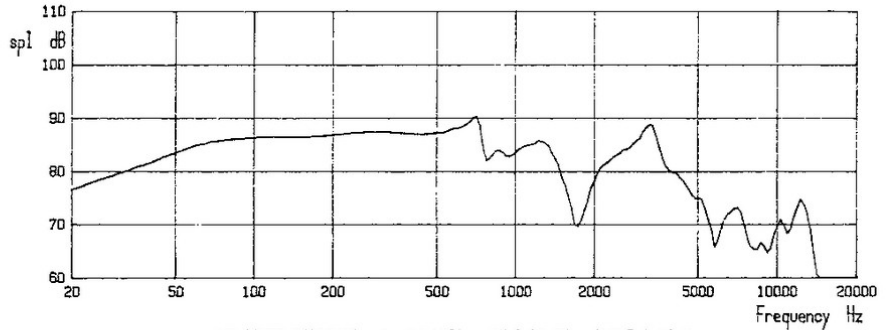


KLF REF Electronics Limited
Tovil Maidstone England

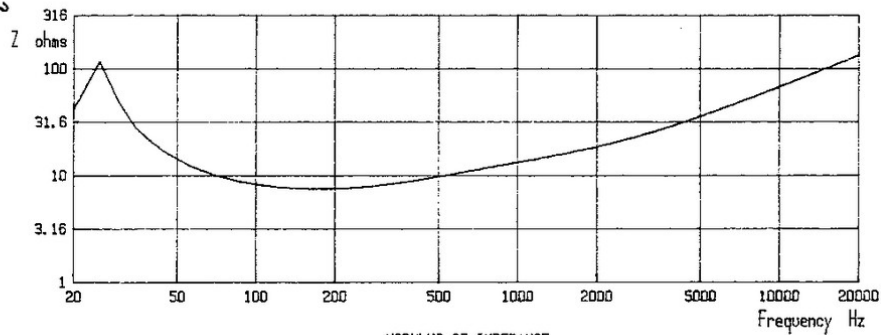
(B139)

DRIVE UNIT DATA

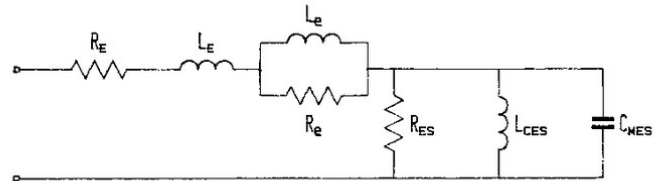
Model	B139B
Type	SP1044
Nominal Impedance	8 ohms
Frequency Range	25 - 500 Hz
Sensitivity	87 dB spl
Net Weight	3.72 Kg
Closed Box Volume	30 - 60 litres
Reflex Box Volume	60 - 140 litres
Power Handling Continuous	28.7 V rms $\omega \omega \omega \omega$
Power Handling Programme	100 W
Flux Density	0.85 T
Total Flux	1.1 mWb
Voice Coil Diameter	52 mm
Max. Continuous Temp.	230 C
Max. Intermittent Temp.	300 C
Thermal Time Constant	13.7 s
Input Impedance R(E)	7.2 ohms
L(E)	1.04 mH
L(e)	0.97 mH
R(e)	4.87 ohms
R(ES)	118 ohms
L(CES)	116 mH
C(MES)	349 uF
Effective Diaphragm Area	349 sq cm
Linear Excursion (pk-pk)	7 mm
Damage Limited Excursion (pk-pk)	12 mm
Effective Moving Mass M(MS)	54 g
Suspension Mechanical Resistance R(MS)	1.43 mech ohms
Suspension Compliance C(MS)	7.43×10^{-4} m/N
Compliance Equiv. Vol. V(MS)	127 litres
Free Air Resonance Frequency f(S)	25 Hz
Force Factor Bl	12.5 N/A
Damping Factors Mechanical Q(M)	6.0
Electrical Q(E)	0.39
Total Q(T)	0.37



AMPLITUDE RESPONSE - 1m ON AXIS - HALF-SPACE - INPUT 2.83 V rms



MODULUS OF IMPEDANCE



DRIVE UNIT EQUIVALENT CIRCUIT