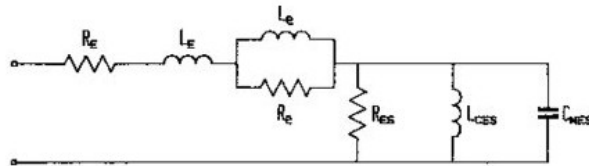
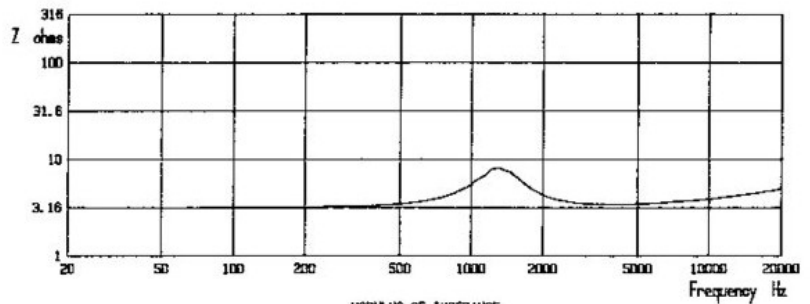
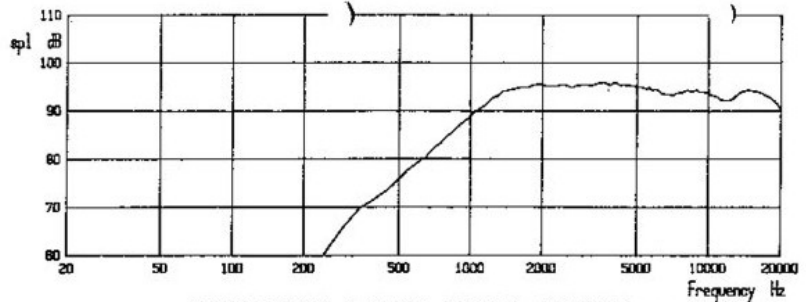


DRIVE UNIT DATA

Model	T33B
Type	SP1210
Nominal Impedance	4 ohms
Frequency Range	3 - 20 kHz
Sensitivity	93 dB SPL
Net Weight	0.55 kg
Closed Box Volume	-
Reflex Box Volume	-
Power Handling Continuous	10 W
Power Handling Programme	300 W
Flux Density	1.6 T
Total Flux	0.24 mWb
Voice Coil Diameter	25 mm
Max. Continuous Temp.	100 C
Max. Intermittent Temp.	150 C
Thermal Time Constant	0.97 s
Input Impedance R(E)	3.1 ohms
L(E)	0.01 mH
L(e)	0.02 mH
R(e)	2.34 ohms
R(ES)	4.91 ohms
L(ES)	0.25 mH
C(ES)	61.0 uF
Effective Diaphragm Area	6.29 sq cm
Linear Excursion (pk-pk)	0.8 mm
Damage Limited Excursion (pk-pk)	-
Effective Moving Mass M(MS)	0.3 g
Suspension Mechanical Resistance R(MS)	1.0 mech ohms
Suspension Compliance C(MS)	0.51x10E-4 m/N
Compliance Equiv. Vol. V(MS)	-
Free Air Resonance Frequency f(S)	1280 Hz
Force Factor Bl	2.22 N/A
Damping Factors	
Mechanical Q(M)	2.41
Electrical Q(E)	1.52
Total Q(T)	0.93



DRIVE UNIT EQUIVALENT CIRCUIT