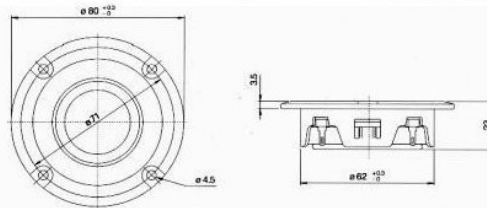


Peerless 1" DOME TWEETER



811582

80 DT 26 55 SF 8Ω



Small competitively priced dome tweeter with an 80 mm face plate. The small size makes it very suitable for use in satellite systems together with for instance 5" woofers or in hi-fi boxes where a small tweeter is preferred. It has a very smooth response and is a good sounding small tweeter.

Thiele Small parameters:

Nominal impedance	Znom (Ω):	8.0
Minimum impedance/at freq.	Zmin (Ω/Hz):	7.4/2300
Maximum impedance	Zo (Ω):	19.5
Dc resistance	Re (Ω):	7.0
Voice coil inductance	Le (mH):	0.1
Resonance frequency	fs (Hz):	1075
Mechanical Q factor	Qms :	6.18
Electrical Q factor	Qes :	3.45
Total Q factor	Qts :	2.21
Mechanical resistance	Rms (kg/s):	0.28
Moving mass	Mms (g):	0.26
Suspension compliance	Cms (mm/N):	0.09
Effective cone diameter	D (cm):	2.8
Effective piston area	Sd (cm ²):	6.2
Force factor	BL (N/A):	1.9
Reference Voltage Sensitivity Re 2.83V 1m at 2300 Hz	(dB):	89.0

Magnet and voice coil parameters:

Voice coil diameter	d (mm):	26
Voice coil length	h (mm):	1.6
Voice coil layers	n :	2
Flux density in gap	B (T):	1.0
Total useful flux	Φ (mWb):	0.2
Height of the gap	hg (mm):	2.5
Diameter of magnet	dm (mm):	55
Height of magnet	hm (mm):	8
Weight of magnet	(kg):	0.07

Power handling:

Longterm Max System Power (IEC)	(W):	90
Max linear SPL (rms)/by power	(dB/W):	101/25
Frequency range for test signal:	3500-20000 Hz	

Normal programme material signal with a crest factor of 6dB (IEC 268-5) is used in both tests

