

REALISTIC[®]

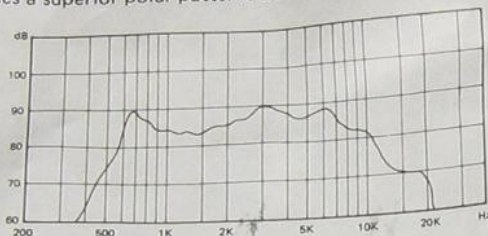
Add Excellence to ANY Stereo System with this
SOFT DOME MIDRANGE SPEAKER
 Catalog Number: 40-1281



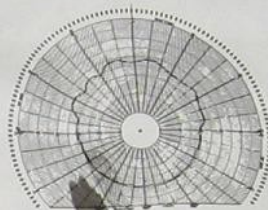
SPECIFICATIONS

Magnet Weight	: 10.8 oz (306 g)
Speaker Weight	: 29.3 oz (830 g)
Power Handling Capacity	: 70 watts peak, program with cross-over capacitor supplied
Impedance	: 8 ohms, $\pm 15\%$ at 2,000 Hz
Frequency Response	: 600 Hz - 8,000 Hz without cross-over capacitor

This REALISTIC Soft Dome Midrange Speaker has been specifically designed for high power, middle range frequency response with cross-overs at 1400 Hz and 8000 Hz. The diaphragm is dome-shaped, resulting in good dispersion, which produces a superior polar pattern. Because of the low cone mass, transient distortion is held to a minimum.



Frequency response curve

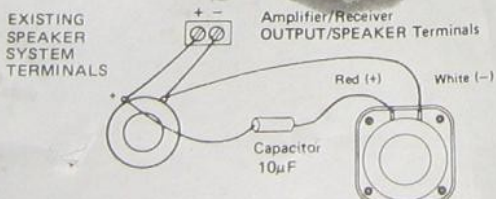


Polar diagram at 4kHz

This Soft Dome Midrange Speaker can be added to any existing 8 ohm speaker system merely by connecting it as shown below (use the cross-over capacitor supplied — leaving this capacitor out may permit low frequencies to damage the voice coil).

The Speaker does not need to be mounted inside the existing enclosure, nor does it require specific baffling. You can mount it on top of or on the side of the existing enclosure. If you do mount it inside an existing enclosure, mount it from the outside (or some other method) so the front edge of the Midrange is flush with the front of the baffle board. This will insure proper sound dispersion and avoid beaming effects.

Wiring Instructions for adding this Midrange Speaker to an existing Speaker System for superior Middle Range Frequency Performance.



NOTE: With capacitor supplied, the Midrange will have a low-end cross-over at 1400Hz. Using different values of cross-over capacitors will provide different cross-over frequencies. A 22 μ F will provide a 900Hz cross-over (power handling will decrease to 40 watts). 6.8 μ F will result in 2900Hz cross-over (with power handling increasing to 80 watts).

RADIO SHACK
 A Division of Tandy Corporation
 Fort Worth, Texas 76102