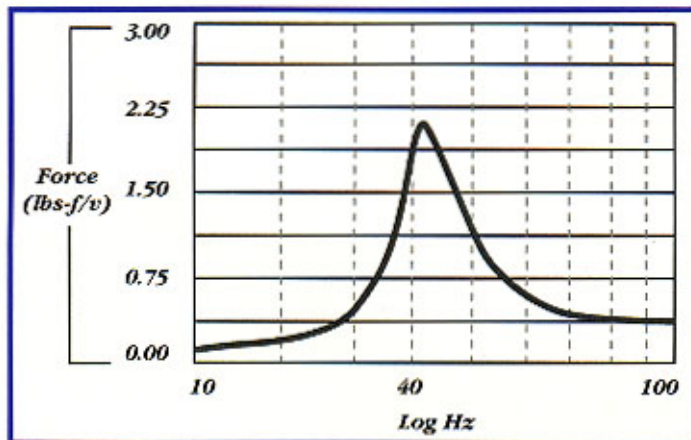


Specifications:

Pro Bass Shaker

Model NumberAST-2B-4
Suggested Retail Price Per Pair\$239
Frame Size5.4" W x 2.2" H
Force, Peak30 lbf (132 N)
Effective Impedance4 Ohms
Power, Continuous50 Watts RMS
Power, Max75 Watts RMS
Height2.2"
Diameter6.2"
Weight3.0 lb.
Resonance Frequency (fo)40 Hz
Usable Frequency Range20-80 Hz

Bass Shaker Frequency Response



- A two-channel 50-100 Watt RMS/channel amplifier is recommended with one Bass Shaker operating from each channel.
- LPF (low pass filter), if used, should be set to 100 Hz.
- For best results, drive both Bass Shakers with same mono signal.
- Both Bass Shakers in an installation should be wired in phase. The Bass Shaker wiring is coded for phasing.
- Bass Shakers perform best when mounted rigidly to a compliant surface in the vehicle. The pan beneath the seats is usually an ideal location for mounting.
- Bass Shakers can be combined with a subwoofer.