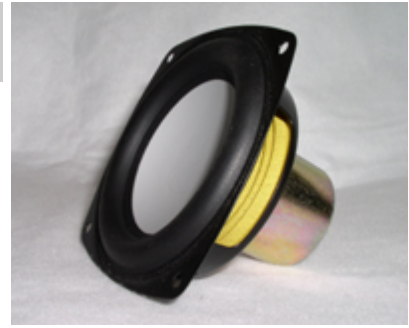
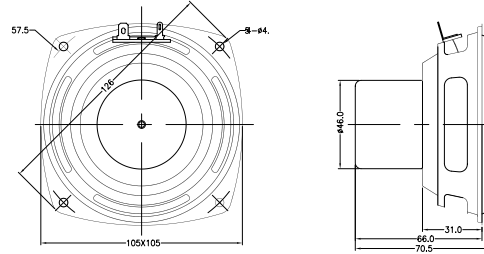


4 inch Woofer

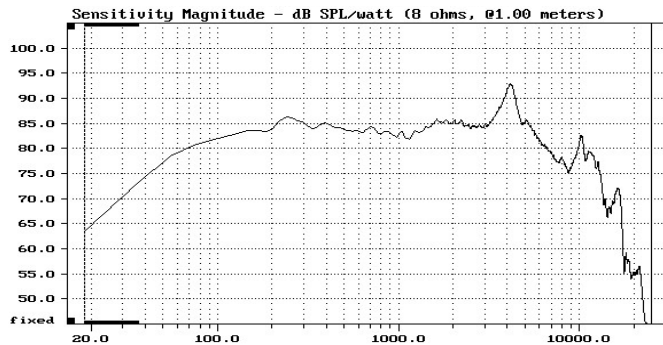
- **High Excursion**
- **Very Low Distortion**
- **No Stray Magnetic Fields**
- **Wide Bandwidth**



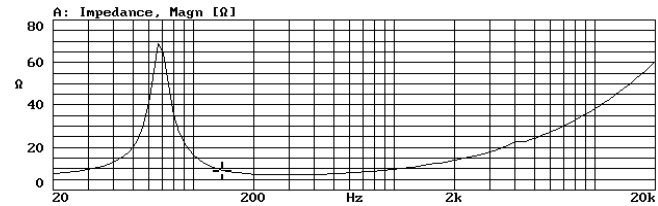
| | |
|---------------------------------|----------------------------------|
| Nominal Diameter | 4 inches (105 mm) |
| Nominal Impedance (Z) | 8 ohms |
| Sensitivity, 1W/1m (E) | 84 dB @ 1 kHz |
| Power Capacity, RMS (Pe) | 20 W |
| Power Capacity, Peak | 40 W |
| Frequency Range (-10dB) | 60 Hz - 6 kHz |
| Minimum Impedance | 4 ohms |
| Voice Coil Diameter | 25.5 mm |
| Voice Coil Winding Length (h) | 5.8 mm |
| Voice Coil Number of Layers (n) | 4 |
| Voice Coil Former Material | Kapton |
| Voice Coil Wire Composition | Copper |
| Magnetic Material | Neodymium radial |
| Stray Flux Shielding | Inherent |
| Magnetic Gap Depth (He) | 16.7 mm |
| Cone Material | Anodized Aluminum |
| Surround Material | Foamed Rubber |
| Polarity, Outward Motion | Positive voltage on (+) terminal |
| Net Weight | 0.384 kg |



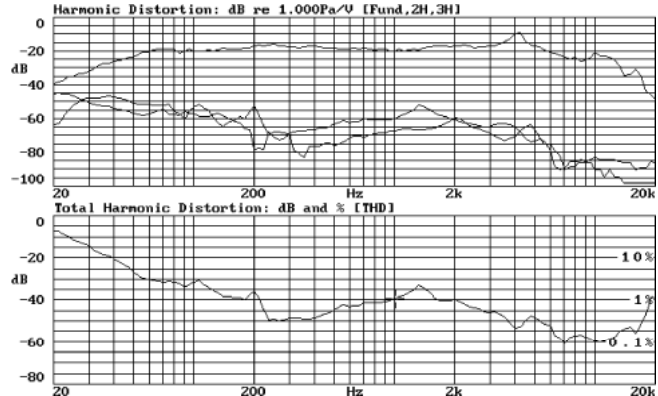
Frequency Response (1W, 1m)



Impedance



Distortion (1W, 1m)



Thiele / Small Parameters

| | |
|--------------------------------|-----------------------|
| Resonant Frequency (Fo) - Fs | 62 Hz |
| Voice Coil DC Resistance - Re | 6.17 ohms |
| Total Q - Qts | 0.44 |
| Mechanical Q - Qms | 7.79 |
| Electrical Q - Qes | 0.47 |
| Equivalent Volume of Air - Vas | 3.18 L |
| Radiating Piston Area - Sd | 50.27 cm ² |

Electrical / Mechanical Parameters

| | |
|----------------------------|-------------------|
| Flux Density x Length - BL | 6.12 Tesla-meters |
| Compliance - Cms | 893 μm/N |
| Total Mass - Mms | 7.29 grams |