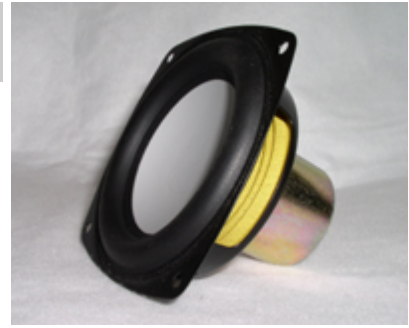
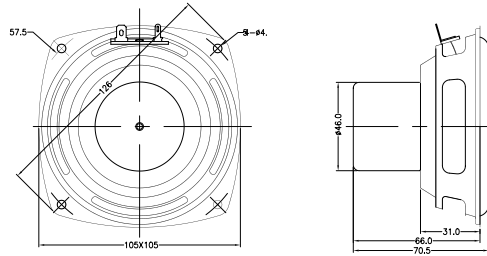


4 inch Woofer

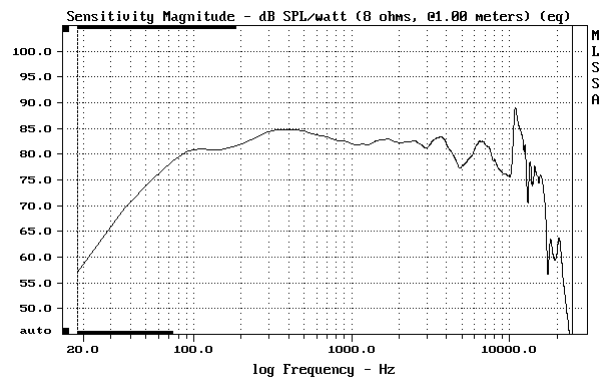
- **High Excursion**
- **Very Low Distortion**
- **No Stray Magnetic Fields**
- **Wide Bandwidth**



Nominal Diameter	4 inches (105 mm)
Nominal Impedance (Z)	8 ohms
Sensitivity, 1W/1m (E)	83 dB @ 1 kHz
Power Capacity, RMS (Pe)	20 W
Power Capacity, Peak	40 W
Frequency Range (-10dB)	60 Hz - 10 kHz
Minimum Impedance	6 ohms
Voice Coil Diameter	25.5 mm
Voice Coil Winding Length (h)	5.8 mm
Voice Coil Number of Layers (n)	4
Voice Coil Former Material	Kapton
Voice Coil Wire Composition	Copper
Magnetic Material	Neodymium radial
Stray Flux Shielding	Inherent
Magnetic Gap Depth (He)	16.7 mm
Cone Material	Anodized Aluminum
Surround Material	Foamed Rubber
Polarity, Outward Motion	Positive voltage on (+) terminal
Net Weight	0.384 kg



Frequency Response (2.83V, 1m)



Thiele / Small Parameters

Resonant Frequency (Fo) - Fs	59 Hz
Voice Coil DC Resistance - Re	6.0 ohms
Total Q - Qts	0.42
Mechanical Q - Qms	6.81
Electrical Q - Qes	0.45
Equivalent Volume of Air - Vas	3.40 L
Radiating Piston Area - Sd	50.27 cm ²

Electrical / Mechanical Parameters

Flux Density x Length - BL	6.13 Tesla-meters
Compliance - Cms	959 m/N
Total Mass - Mms	7.64 grams

Impedance

